



84 Gloucester Place

, Peterlee, SR8 2HD

Offers In The Region Of £95,000



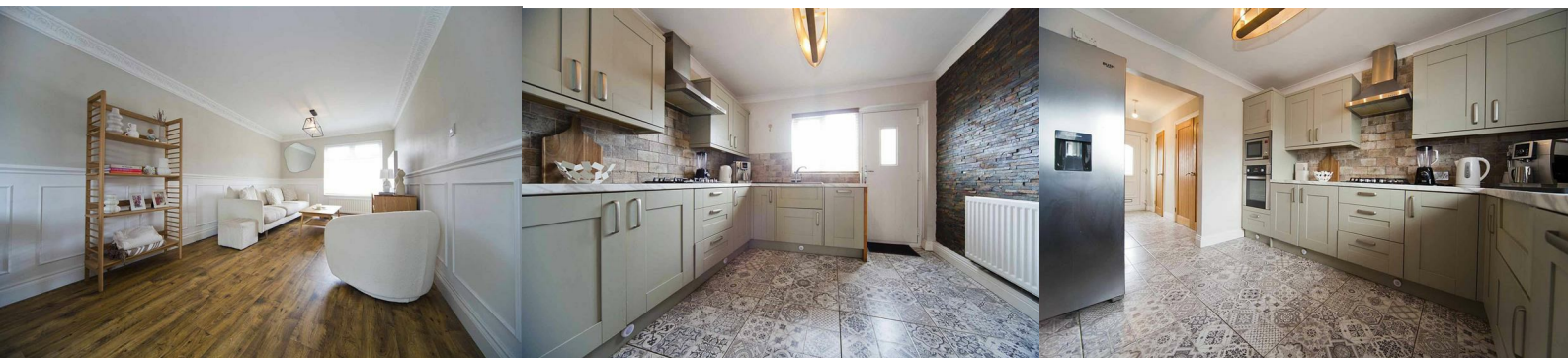
Nestled in the desirable area of Gloucester Place, Peterlee, this stunning three-bedroom house offers a perfect blend of comfort and modern living. The property boasts a charming green space to the front, providing a pleasant view and a welcoming atmosphere.

Families will appreciate the proximity to both primary and secondary schools, making it an ideal location for those with children in addition to the properties proximity to the A19 for commuting to neighbouring towns and cities.

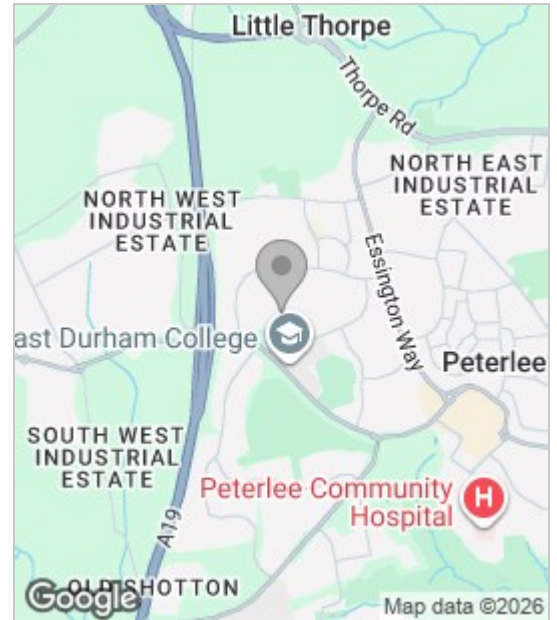
Upon entering, you are greeted by a spacious reception area that sets the tone for the rest of the home. The addition of a conservatory enhances the living space, allowing for an abundance of natural light and a lovely spot to relax or entertain.

The modern kitchen is well-equipped, making meal preparation a delight, while the contemporary bathroom and convenient ground floor WC add to the practicality of the home.

Outside, the property features both front and rear gardens, offering ample space for outdoor activities, gardening, or simply enjoying the fresh air. This house is not just a place to live; it is a wonderful family home that combines style, space, and a fantastic location. Whether you are looking to buy or rent, this property is sure to impress.



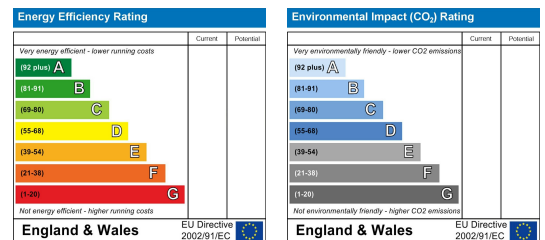
Area Map



Floor Plan



Energy Efficiency Graph



These particulars, whilst believed to be accurate are set out as a general outline only for guidance and do not constitute any part of an offer or contract. Intending purchasers should not rely on them as statements of representation of fact, but must satisfy themselves by inspection or otherwise as to their accuracy. No person in this firm's employment has the authority to make or give any representation or warranty in respect of the property.